

GMR

Gas Mechanical Reel

The GMR mechanical reels are one of the most well-known solutions for extracting gases directly from its source (vehicle tailpipe). They are available in different versions, from 3" to 8" diam hose, with a maximum length of 50'. The product can be completed with countless accessories, such as nozzles for any kind of exhaust pipe, on/off switches, closing valves to maximise its performance, as well as bracketing systems for several kinds of industrial ceiling. Convenient, basic and complete, the GMR is the best-selling hose reel line.

Product Plus

- it's equipped with armoured rubber flexible hose totally crushproof and resistant up to 400°F;
- the spring power can be easily adjusted in case of needs;
- hundreds of exhaust nozzles can be connected in order to find the best adaptation;
- sturdy metal construction with plastic discs and dedicated drum for optimizing the dimensions;





GMR+



Spring recoil hose reel for exhaust extraction complete with GT2 flexible hose totally crushproof and resistant up to 400°F. The safety stopper and the clamps for the nozzle are always included.

GMR+	Ø	L.
GMR+757.5	3"	25'
GMR+7510	3"	33'
GMR+7512.5	3"	41'
GMR+7515	3"	50'
GMR+1007.5	4"	25'
GMR+10010	4"	33'
GMR+10012.5	4"	41'
GMR+10015	4"	50'

GMR+	Ø	L.
GMR+1257.5	5"	25'
GMR+12510	5"	33'
GMR+12512.5	5"	41'
GMR+12515	5"	50'
GMR+1507.5	6"	25'
GMR+15010	6"	33'
GMR+15012.5	6"	41'
GMR+15015	6"	50'
GMR-2006	8"	20'

GM



Microswitch for the automatic start / stop of the centralized fan to be connected to the main switchboard (not included)

GM
GM

GFT



GFT	Ø
GFT-75	3"
GFT-100	4"
GFT-125	5"
GFT-150	6"
GFT-200	8"

Safety stopper for flexible hoses on mechanical hose reels. Normally provided together with GMR and GMRFHP hose reels.

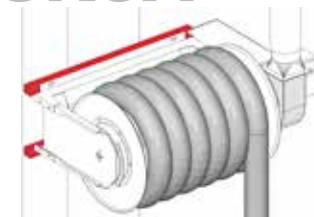
CV+R



Automatic closing valve activated by the rotation of the disk, available in two different diameters in accordance to the hose diameter.

CV+R	Ø	APPLICATION
CV+125R	5"	suitable for reels with 3" and 4" hose
CV+160R	6.3"	suitable for reels with 5" and 6" hose

GKSA



GKSAC



Universal reinforced fixing kit for hose reels to be placed on weak walls or on columns.

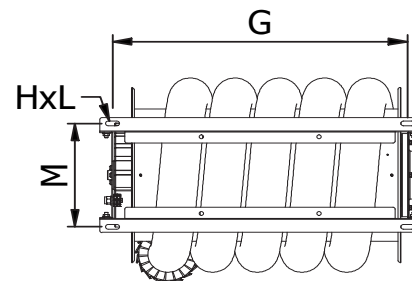
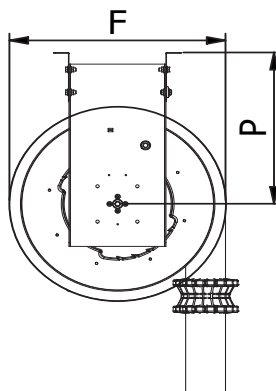
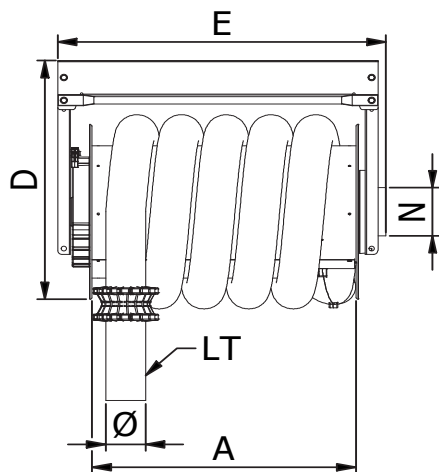
GKSA	APPLICATION
GKSA	for thin walls or pillars
GKSAC	for thin walls or pillars not to be drilled



A brand of RO & Co S.p.A.
(U.S. BRANCH)
601 Brickell Key Drive
Miami, Florida 33131, USA
Tel. +1 305 (705) 5017
sales@worky-america.com

www.worky-italy.com

GMR+ technical datasheet



COD.	GMR+											
	Ø [in]	LT [ft]	A [in]	D [in]	E [in]	F [in]	G [in]	HxL [in]	M [in]	N [in]	P [in]	Lb
GMR+757.5	3	25	24.80	25.00	30.71	20.79	27.64	0.78x0.51	10.79	5	14.80	64
GMR+7510		33	31.50	25.00	37.40	20.79	2x17.17		10.79	5	14.80	79
GMR+7512.5		41	26.77	31.65	33.74	25.59	2x13.37		12.76	6.3	19.06	104
GMR+7515		49	33.46	33.19	40.43	25.59	2x17.17		12.76	6.3	19.06	115
GMR+1007.5	4	25	24.80	26.97	30.71	22.76	27.64	0.78x0.52	10.79	5	15.79	66
GMR+10010		33	31.50	26.97	37.40	22.76	2x17.17		10.79	5	15.79	86
GMR+10012.5		41	33.46	32.20	40.43	26.69	2x16.71		12.76	6.3	19.06	110
GMR+10015		49	42.52	33.19	49.49	26.69	2x14.17		12.76	6.3	19.06	126
GMR+1257.5	5	25	26.77	33.19	33.74	28.74	2x13.37	0.78x0.53	12.76	6.3	19.06	97
GMR+12510		33	33.46	33.19	40.43	28.74	2x16.71		12.76	6.3	19.06	106
GMR+12512.5		41	42.52	33.19	49.49	28.74	3x14.2		12.76	6.3	19.06	130
GMR+12515		49	42.52	33.19	49.49	28.74	3x14.2		12.76	6.3	19.06	137
GMR+1507.5	6	25	26.77	35.16	33.74	30.71	2x13.4	0.78x0.54	12.76	6.3	19.06	108
GMR+15010		33	33.46	35.16	40.43	30.71	2x16.71		12.76	6.3	20.04	115
GMR+15012.5		41	42.52	35.16	49.49	30.71	3x14.2		12.76	6.3	20.04	134
GMR+15015		49	50.08	35.16	57.05	30.71	3x17.5		12.76	6.3	20.04	168

THIS DRAWING IS PROPERTY OF RO & Co S.p.A. THE COMPLETE OR PARTIAL REPRODUCTION OF THIS DOCUMENT IS FORBIDDEN. THE OWNER RESERVES THE RIGHT TO UPDATE, MODIFY OR AMEND ANY SPECIFICATION WITHOUT PRIOR NOTICE.

Rev.00 04/05/2021

GMRFHP/US

Gas Mechanical Reel with High Pressure Fan

The GMRFHP/US mechanical hose reels hold the same technology as GMR hose reel with an integrated high pressure fan. The GMRFHP/US is a perfect solution for single or double work bays. It can be completed with different nozzles, chimney and on/off switch. It is possible to add the automatic start (GMC/US) that will activate the fan by pulling the hose and turn it off by stowing it back.

Product Plus

- it's equipped with armoured rubber flexible hose totally crushproof and resistant up to 400°F;
- the spring power can be easily adjusted in case of needs;
- hundreds of exhaust nozzles can be connected in order to find the best adaptation;
- sturdy metal construction and dedicated drum for optimizing the dimensions;
- Fan included to minimize the costs;



GMRFHP/US



Spring recoil hose reel complete with direct driven high pressure fan, crushproof flexible hose resistant up to 400°F and hose stopper.

GMRFHP/US	Ø"	L. '	GMRFHP/US	Ø"	L. '
GMRFHP/US+757.5	3"	25'	GMRFHP/US+1257.5	5"	25'
GMRFHP/US+7510	3"	33'	GMRFHP/US+12510	5"	33'
GMRFHP/US+7512.5	3"	41'	GMRFHP/US+12512.5	5"	41'
GMRFHP/US+7515	3"	50'	GMRFHP/US+12515	5"	50'
GMRFHP/US+1007.5	4"	25'	GMRFHP/US+1507.5	6"	25'
GMRFHP/US+10010	4"	33'	GMRFHP/US+15010	6"	33'
GMRFHP/US+10012.5	4"	41'	GMRFHP/US+15012.5	6"	41'
GMRFHP/US+10015	4"	50'	GMRFHP/US+15015	6"	50'

GMC/US



Microswitch with small switchboard included for the automatic start / stop of the integrated fan. Suitable only for the reels with integrated fan.

GMC/US	HP	Phases	Therm. Prot.
GMC/US	-	3	x
GMCM/US	-	1	x
GMCP/US-0.5	0.5 HP	3	✓
GMCP/US-1	1 HP	3	✓
GMCP/US-1.5	1.5 HP	3	✓

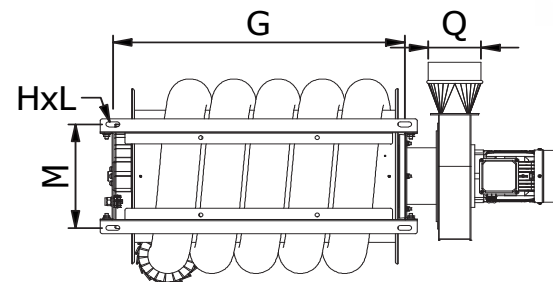
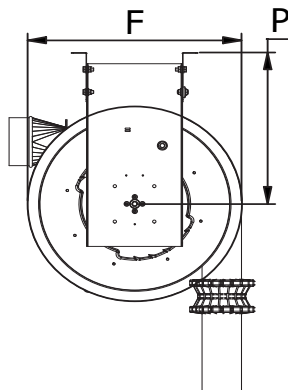
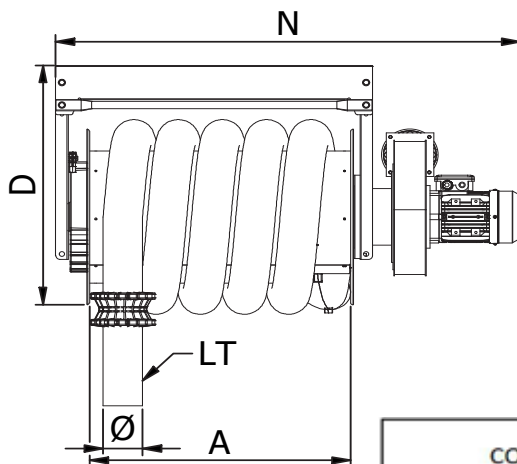
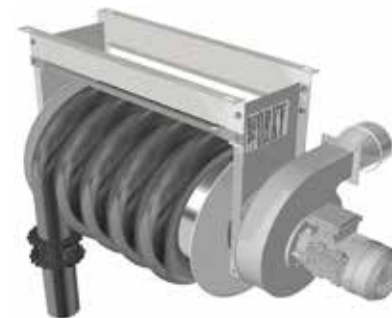
GFT



Safety stopper for flexible hoses on mechanical hose reels. Normally provided together with the hose reels.

GFT	Ø
GFT-75	3"
GFT-100	4"
GFT-125	5"
GFT-150	6"
GFT-200	8"

GMRFHP/US+ technical datasheet



COD.	GERFHP/US+ / GERFTHP/US+													
	Ø [in]	LT [ft]	HP/kw	A [in]	D [in]	F [in]	G [in]	HxL [in]	M [in]	N [in]	Q [in]	P [in]	R [mm]	Lb
GERFHP/US+757.5	3	25	0.5/0.37	24.80	25.00	20.79	27.64	0.78x0.51	10.79	32.99	5	14.80	4.72	106
GERFHP/US+7510		33	0.5/0.37	31.50	25.00	20.79	2x17.17		10.79	52.56	5	14.80	4.72	115
GERFHP/US+7512.5		41	0.5/0.37	26.77	31.65	25.59	2x13.37		12.76	47.87	5	19.06	4.72	159
GERFHP/US+7515		49	0.5/0.37	33.46	33.19	25.59	2x17.17		12.76	54.57	5	19.06	4.72	170
GERFHP/US+1007.5	4	25	0.5/0.37	24.80	26.97	22.76	27.64	0.78x0.52	10.79	46.42	5	15.79	4.72	108
GERFHP/US+10010		33	0.5/0.37	31.50	26.97	22.76	2x17.17		10.79	52.56	5	15.79	4.72	119
GERFHP/US+10012.5		41	0.5/0.37	33.46	32.20	26.69	2x16.71		12.76	54.57	5	19.06	4.72	161
GERFHP/US+10015		49	0.5/0.37	42.52	33.19	26.69	2x14.17		12.76	64.61	5	19.06	4.72	187
GERFHP/US+1257.5	5	25	1.5/1.1	26.77	33.19	28.74	2x13.37	0.78x0.53	12.76	48.86	6.3	19.06	5	170
GERFHP/US+12510		33	1.5/1.1	33.46	33.19	28.74	2x16.71		12.76	55.55	6.3	19.06	5	185
GERFHP/US+12512.5		41	1.5/1.1	42.52	33.19	28.74	3x14.2		12.76	64.61	6.3	19.06	5	214
GERFHP/US+12515		49	1.5/1.1	42.52	33.19	28.74	3x14.2		12.76	64.61	6.3	19.06	5	220
GERFHP/US+1507.5	6	25	1.5/1.1	26.77	35.16	30.71	2x13.4	0.78x0.54	12.76	48.86	6.3	19.06	5	190
GERFHP/US+15010		33	1.5/1.1	33.46	35.16	30.71	2x16.71		12.76	55.55	6.3	20.04	5	203
GERFHP/US+15012.5		41	1.5/1.1	42.52	35.16	30.71	3x14.2		12.76	64.61	6.3	20.04	5	218
GERFHP/US+15015		49	1.5/1.1	50.08	35.16	30.71	3x17.5		12.76	72.17	6.3	20.04	5	218